



CATERHAM





OWN THE ROAD

The road can be your friend or your adversary. Some roads are your friend, some are your adversary. Others make it their business to challenge you - through the weather, the terrain, the traffic, and gradients.

These are the roads that the Caterham driver, with their light touch, can handle. These are the roads that give it all they've got but never quite have the edge of the Caterham pilot and the legendary Seven - a tag team made in automotive heaven.

Driving doesn't have to be a fight. It's just more fun sometimes.



SEVEN 270

...miles, as the Seven 270's free-revving engine provides all-round driving

CS TOP SPEED 122 MPH POWER 135 BHP PACKS SR

ENGINE FORD SIGMA



SEVEN 420

...a gear in performance, the Seven 420 offers more horsepower over the Seven 360, for the most ardent sports car fan real driving

CS TOP SPEED 136 MPH POWER 210 BHP PACKS SR

ENGINE FORD DURATEC



SEVEN 310

Born out of a happy accident, the Seven 310 has a power and rev limit increase over the Seven 270 that produces the very best from the Sigma engine.

0-60 MPH 4.90 SECS TOP SPEED 127 MPH POWER 152 BHP PACKS SR

PERFORMANCE

ENGINE 1.6 LITRE FORD SIGMA



SEVEN 620

Having a supercharged engine, the Seven 620 is our fastest ever road car. It's not for the faint-hearted. Hold on tight...

0-60 MPH 2.79 SECS TOP SPEED 155 MPH POWER 310 BHP PACKS SR

PERFORMANCE

ENGINE SUPERCHARGED 2.0 LITRE FORD DURATEC





SEVEN270

With little more than 500kg to push around, it gives you an unexpected but satisfying thump.

To put the wily power of this little ass on wheels, we put 350bhp under the bonnet to match the chassis, making stopping or turning corners at any speed a breeze.

The Seven 270's agile frame lets it snaffle up the power to get the job done - 0-60mph in 4.5 seconds, dead without the enemy ever knowing.

It will do it all with an understated sensibility.





SEVEN310

Size isn't everything. They say it's how you drive. The SEVEN 310 is a master of its art. This is 1.6 litre

Developed on the race track, the SEVEN 310 generates 152bhp and when matched with the balanced Caterham ever built.

Just enough power, just enough grip, just enough that inspires confidence, offering 100% of the top.

This is a pure driver's Caterham SEVEN 310.



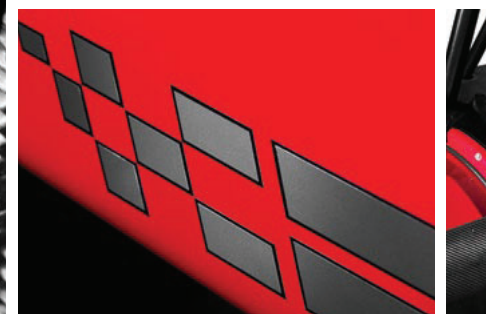


SEVEN360

Precision, control and finesse are fantastic attributes for a more experienced Seven driver may s

With the move to more muscle, than strength to the Seven's armoury. Now into more pumped up territory, with a

But this bruiser is equally at home as a makes this the benevolent heavyweight to its rivals.





SEVEN420

Some cars just aren't afraid of any road.

A 210bhp wielding gladiator ready to deliver huge dollops of torque, backed up by a visceral but intensely visceral ride.

Meanwhile, as the driver, you don't need the characteristics of the Seven mean this is a car for sensible speeds.





SEVEN 620

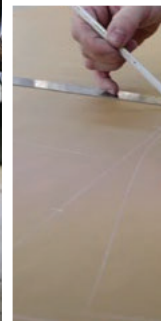
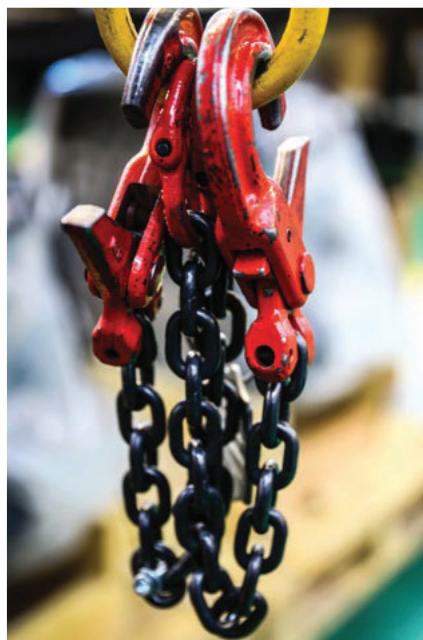
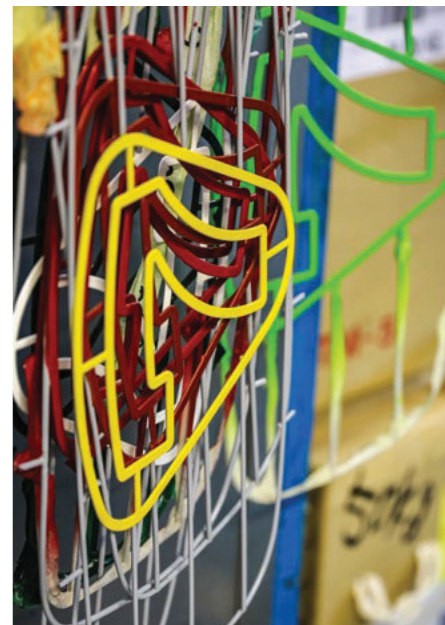
Finding an analogy for the Seven 620

The Seven 620 is the fastest production car in the world with the same 2.0 litre Duratec from the heart of a Formula 1 car to «Jeremy Clarkson pause» a supercar.

This ballistic monster boasts 310bhp. Compared to a normal car, it's a missile. With wheels. And you can drive it.

Do you dare...?







BUILT UPON DECADES OF CATERHAM

In this era of automation and technology, it's too easy to let a car can now park itself and moves are afoot to allow it to do so.

At Caterham, we hold with the theory that less is more.

Driving a Seven is all about just that - no driver aids or frills and responsive driving experience.

Our crack team of technicians create your Seven lovingly, fitting into every component they attach to the car's iconic frame. British bundles of fury together, they're hard at work they can save even more weight, refine the chassis further and enhance the Seven.

That's why every car that leaves our factory carries with it the pride of those who built it.

OUR PRIDE; YOUR PRIDE



EVER DREAMED OF BECOMING

Sure you have; we all have. That's why we created the unique and incredibly popular Caterham Academy for those that have no previous racing experience.

Since 1995, more than 1000 people have been turned into bona fide racing drivers through the Caterham Academy – our novice racing series.

The Caterham Academy is an all-inclusive package of road-legal racing. We've crafted a special programme of competition for you and support you with every bit of our knowledge. Our specialist Academy coordinators are on-hand to guide you through your first year as you become a racing driver; an experience you will share with more than 50 complete novices, just like you.

We don't know if it is the paddock camaraderie, the friendships that quickly develop, or the amazing atmosphere of achieving a life-long goal together that makes the Caterham Academy so special, but whatever it is, it is often described by the drivers themselves as the best year of their lives.

Oh, and it's progressing giving you the same Seven road-legal a weekend

CATERHAM

- Academy
- Competition
- BRSCC
- Exclusive
- Seven
- Track

CATERHAM MOTORSPORT

DRIVER FRIENDLY RACING

Over 30 years of factory championships since its foundation in 1986, with five factory series competing on the finest circuits.

SEVEN 270R CHAMPIONSHIP

The Seven 270R Championship marks the third rung of the Caterham Motorsport ladder, with seasoned drivers being joined by those rising up through the Academy and Roadsport ranks. Competing cars have race-focused track suspension and the removal of the windscreen and lights helps the aerodynamics.

NOVICE EXPERT

PROFESSIONAL RACE SUPPORT  ALLOWED

SEVEN 310R CHAMPIONSHIP

The next step up from the Seven 270R Championship is the Seven 310R Championship. This Championship follows an identical formula using the latest generation of Ford Sigma engine, which adds more power as well as the additional limited slip differential.

NOVICE EXPERT

PROFESSIONAL RACE SUPPORT  ALLOWED

SEVEN 420R CHAMPIONSHIP

The Seven 420R Championship is the pinnacle of Caterham Motorsport and our flagship series. With a change of car, it delivers more power with the 2.0 Litre Duratec engine and sequential gearbox, more speed, more competition and what drivers call, "the best Caterham race car ever".

NOVICE EXPERT

PROFESSIONAL RACE SUPPORT  ALLOWED



OUR SEVEN EXPERIENCE

ou, turn it into an experience. Challenge yourself, raise your
ed with the right tool for the job. Our S and R Packs are
ferences, so whether you're a track day dominator with the
er with the S Pack, we've got you covered.

njoying the open road, never felt so good with the S Pack.
sumptuous leather seats, heaters and a full hood and
ality, the S Pack ensures you leave each and every drive

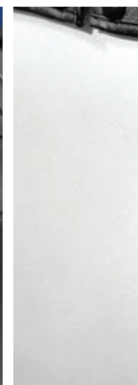
erham it has to be the R Pack. The race-bred package is
e of the already impressive Seven platform and includes a
sion, four-point race harnesses, composite race seats and
les. The R Pack allows you to explore your Seven's racing
e apex – feel the thrill of finding the limit.

RPACK ENGINEERED FOR THE TRACK

- Limited-slip differential
- Lightweight flywheel
- Rear anti-roll bar
- Sport suspension pack
- 15" Orcus alloy wheels with Avon tyres
- Up-rated brake master cylinder
- Carbon fibre dashboard
- Carbon leather tunnel top
- Composite race seats
- MOMO steering wheel
- Four-point race harnesses
- Black pack
- Unique key, gearknob and instruments
- Shift light
- 12V socket
- Aero filler cap
- Choice of four paint finishes



SPACK DESIGNED FOR THE ROAD





GAIN THE SATISFACTION OF BUILDING

STEP 1

Specify your model and options from the Caterham pricing and specifications list.

STEP 2

The chassis, nosecone, front and rear cycle wings begin their journey at the paint shop and arrive at the factory fully painted in your chosen colour*. The painted chassis then undergoes preparation on the production line.

It is during this time that factory-trained technicians fit the core elements of the car including the wiring loom, dashboard, gauges, scuttle panel, fuel tank, fuel lines, brake pipes, brake lines, pedal box and those all-important pedals.

On completion, the remainder of the Caterham is hand-picked and boxed up ready to depart the factory.

STEP 3

We will then be in touch to book a delivery date at a time to suit you.

STEP 4

Now that the car is ready, the journey begins through the production line with each car given a unique time.

A tool kit and new Severn questions are included.

STEP 5

The final stage is the delivery of the new Vehicle A to help you get the most out of your eligible for.

STEP 6

On receipt of the new open road.

MORE THAN THE SUM OF

*If paint option is chosen.

SELECTED – THE FINEST PRE-OWNED SEVENS ON THE MARKET

improved used Seven programme, guaranteeing that you are buying a Caterham Seven from a proven and reliable source. We carefully handpick Sevens to become part of our Caterham Selected programme, ensuring that you are buying only the very best. We want to see you get the most out of your Seven and have created a list of benefits you will be able to rely on. This is the real reason you bought a Caterham; the pure driving experience that you can't find anywhere else.

• 100% Caterham parts

• 3-year warranty

• 24-hour roadside assistance

• 1-year warranty

When purchasing a Seven through the Caterham Selected programme, you can be sure you are getting the best of the best. Enjoy your Seven to the full, knowing you are getting the most out of your Seven.





FROM INITIAL PURCHASE TO MAINTENANCE, SUPPORT AND INSURANCE, WE'VE GOT YOU COVERED

AFTERSALES

We are able to look after and offer bespoke service packages for you and your vehicle for the full duration of your Caterham ownership. We have numerous Aftersales services that we offer to our customers including:

- Servicing
- Repairs and maintenance
- Upgrades: both engine and vehicle
- MOTs
- Post build checks

Our self-build customers are eligible for our exclusive IVA Presentation Package. We will check your vehicle after the build and present it for it's IVA test to ensure that all the correct checks have been carried out. As we are confident that the car will pass, we will pay for the retest if it does happen to fail.

Any Caterham job is carried out passionately to the highest of standards to ensure the best quality of work is produced.

SERVICING

A car as special as a Caterham deserves to be meticulously looked after. To keep your car in tip top condition, only an official Caterham service is good enough. Available at all of our UK dealerships, our

dedicated maintenance team is on hand to ensure your Caterham is always in the best of health. New car service packages include:

- First service
- Annual service

To find your nearest Caterham dealer, visit www.caterham.co.uk

CATERHAM

We offer a range of insurance options to suit your needs. We can tailor a policy to your specific requirements, ensuring you get the best value for your money. Contact us today to find out more.

CATERHAM

Caterham offers a range of services to help you protect your investment. We offer a range of services to help you protect your investment. We offer a range of services to help you protect your investment. We offer a range of services to help you protect your investment.

* Finance available subject to status, terms and conditions apply.

UNDERSTAND A SEVEN IS TO DRIVE ONE

EXPERIENCE

the most
e. So why
e side exit
long test
aterham's

Our Caterham Driving Experiences are operated through our dealer BookaTrack. These events are run predominantly at Donington, as well as various other UK circuits.

Wherever you go, however, the experience is the same; a fantastic day's driving behind the wheel of a car once branded 'too fast to race'.

Suitable for everyone*, even those with no track experience, all Caterham Driving Experiences are operated by professional driving instructors who share both our passion for the Seven and our desire to offer you the most exhilarating day's driving possible.

After all, it's called Experience for a reason...

mation on
ns, please

participate.



SVR



1973

Afterham
takes over
production
rights for the
SVR from
Lotus

1987

Production
moves to
Dartford

1995

New racing
Academy for
novices in the
UK

2000

Launch of the
new SV, wider
bodied chassis

2002

R400 wins
its class at
the 24 hours
Nurburgring
by 10 laps

2005

Nearn family
sells to Corven
Ventures

2007

50 years of
the Seven
celebrations
held at
Donington
Park

2008

R500 wins
Top Gear
Car of the Year

2011

Corven
Ventures
sells to Tony
Fernandes and
Kamarudin
Meranun

2013

Caterham
enters a
competition
in the F1
Formula
World
Champion

70	310	360	420	620	Academy
●	●	-	-	-	●
-	-	●	●	-	-
-	-	-	-	●	-
-	-	-	-	●	-
R	R	●	●	●	-
-	-	○	●	●	-
-	-	○	●	●	-
●	●	●	●	-	●
-	-	-	-	●	-

70	310	360	420	620	Academy
●	●	●	●	●	●
○	○	○	○	-	-
-	-	-	-	R	-
●	●	●	●	●	-
R	R	R	R	●	-

on-S models) **R** Standard on R Pack (available as an option on non-R models)

and on S and R Pack (available as an option on non-S and R models)

SUSPENSION

	270	310
Quick ratio steering rack	●	●
Standard width dual front unequal length wishbones	●	●
Widetrack dual front unequal length wishbones	R	R
Front anti-roll bar	●	●
Dedion rear suspension with A frame and trailing arms	●	●
Dedion rear suspension with A frame and Watt's linkage	-	-
Adjustable rear anti-roll bar	R	R
Road optimised dampers	S	S
Road optimised dampers with adjustable spring platforms	R	R
Track optimised dampers with adjustable spring platforms	○	○
Race optimised dampers with adjustable spring platforms	○	○

BRAKES

	270	310
Solid front discs	●	●
Ventilated front discs	○	○
Grooved ventilated front discs	-	-
Disc rear brakes	●	●
Quad piston callipers	○	○
Race master cylinder	R	R

70	310	360	420	620	Academy
●	●	●	●	●	-
●	●	●	●	●	-
S	S	S	S	S	-
●	●	●	●	●	-
S	S	S	S	S	-
S	S	S	S	-	●
R	R	R	R	●	-
S	S	S	S	S	-
●	●	●	●	●	-
●	●	●	●	-	●
R	R	R	R	-	-
-	-	-	-	●	-

70	310	360	420	620	Academy
S	S	S	S	S	-
○	○	○	○	○	-
R	R	R	R	-	●
○	○	○	○	-	-
○	○	○	○	R	-
-	-	○	○	○	-
○	○	○	○	○	●

CONTROLS	270	310
MOMO steering wheel	●	●
MOMO steering wheel with quick release	○	○
Black faced instruments	-	-
Grey faced instruments with 'S' detail	S*	S*
Black faced instruments with 'R' detail	R*	R*
Gear knob - aluminium silver	-	-
Gear knob - aluminium grey with 'S' detail	S*	S*
Gear knob - aluminium black with 'R' detail	R*	R*
Gear knob - nylon	-	-
Shift light	R	R
Sequential shift lights	○	○

70	310	360	420	620	Academy
●	●	●	●	●	●
●	●	●	●	●	●
○	○	○	○	R	-
●	●	●	●	●	●
○	○	○	○	R	-
S	S	S	S	S	-
R	R	R	R	R	-
S	S	S	S	-	-
R	R	R	R	●	●
○	○	○	○	○	-
●	●	●	●	●	-
●	●	●	●	●	●
○	○	○	○	○	-
○	○	○	○	○	-

WHEELS	270	310
13" Apollo - HiPower Silver (6" front & 6" rear)	○	○
13" Apollo - HiPower Silver (6" front & 8" rear)	○	○
13" Apollo - Black with diamond cut rim (6" front & 6" rear)	○	○
13" Apollo - Black with diamond cut rim (6" front & 8" rear)	○	○
14" Classic - Silver (6" front & 6" rear)	S	S
15" Orcus - HiPower Silver (6.5" front & 6.5" rear)	○	○
15" Orcus - Black with diamond cut rim (6.5" front & 6.5" rear)	R	R



13" APOLLO



14" CLASSIC

270	310	360	420	620	Academy
in-line	4 cyl in-line	4 cyl in-line	4 cyl in-line	4 cyl in-line	4 cyl in-line
1596cc	1596cc	1999cc	1999cc	1999cc	1596cc
Fuel injected	Fuel injected	Fuel injected	Fuel injected	Fuel injected	Fuel injected
79.0mm	79.0mm	87.5mm	87.5mm	87.5mm	79.0mm
81.4mm	81.4mm	83.1mm	83.1mm	83.1mm	81.4mm
16v DOHC	16v DOHC	16v DOHC	16v DOHC	16v DOHC	16v DOHC
11.0:1	11.0:1	10.8:1	10.8:1	9.2:1	11.0:1
Single butterfly	Single butterfly	Single butterfly	Single butterfly	Supercharged	Single butterfly
Wet sump	Wet sump	Wet sump	Dry sump	Dry sump	Wet sump
Unleaded 95 RON	Unleaded 95 RON	Unleaded 95 RON	Unleaded 95 RON	Unleaded 98 RON	Unleaded 95 RON

POWER	270	310
Maximum power	134bhp @ 6800rpm	152bhp @ 7000rpm
Maximum torque	162Nm @ 3900rpm	168Nm @ 5600rpm
Maximum RPM	6800rpm	7500rpm

PERFORMANCE (maximum)	270	310
0-60mph	5.0s	4.9s
Maximum speed	122mph (196km/h)	127mph (204km/h)

TRANSMISSION	5-speed	6-speed	6-speed sequential
1st	3.136	2.690	2.180
2nd	1.880	2.010	1.684
3rd	1.330	1.590	1.368
4th	1.000	1.320	1.153
5th	0.814	1.130	1.000
6th	-	1.000	0.871
Final drive	3.91:1	3.64:1	3.62:1

S3 Chassis	Wide-bodied SV Chassis
2225mm	2305mm
1270mm* / 1336mm**	1446mm
1336mm	1446mm
3100mm	3300mm
1575mm	1685mm
1115mm	1140mm
990mm	1015mm
930mm	1110mm
120L	130L
32L	36L



TYRE FITMENT

	Avon ZR322	Avon ZT5
	185/70	185/60
Academy	●	-
13" Apollo x 6"	-	-
13" Apollo x 8"	-	-
14" Classic	-	●
15" Orcus	-	-

All Seven models are available in our selected range of paint finishes*
We can also paint your Caterham in any major manufacturer's colour**.

STANDARD



Gravity Black



Exocet Red



Vintage Green



Firecracker Yellow

PREMIUM



Hyper Green



Gulf Blue



Black Grey



Ultraviolet



Ballistic Orange



Peppermint Green

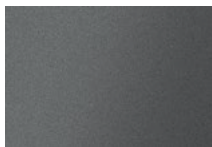


Polar White

EXCLUSIVE



Viper Blue



Dark Silver



Riviera Blue



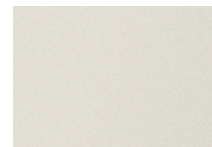
Competition Red



Arancio Argos



Detonator Yellow



Crystalline White



Nardo Grey



Acid Green

*Prices vary depending on model & specification.

** Paint code required. Some colours require specific materials and processes which may increase build time and cost.

Colours shown are representative of Caterham Custom Paint Range and may vary on actual vehicles. Please visit your nearest Caterham dealer for more information.



FIND YOUR LOCAL CATERHAM DEALERSHIP

- A Caterham Gatwick**
Caterham House – Dialog, Fleming Way, Crawley,
West Sussex, RH10 9NQ
☎ +44 (0) 1293 312300
caterhamcars.com
- B Caterham Williams Automobiles**
TotterOak Courtyard, Horton, Chipping Sodbury,
Bristol, BS37 6QG
☎ +44 (0) 1454 315112
williamsautomobiles.com
- C Caterham BookaTrack**
Donington Park Circuit, Castle Donington,
Derby, DE74 2RP
☎ +44 (0) 843 2084635
bookatrack.com
- D Caterham Oakmere Motor Group**
Manchester Road, Northwich, Cheshire, CW9 7NA
☎ +44 (0) 1606 41481
oakmeremotorgroup.co.uk

Caterham Insurance +44 (0) 1823 250735

CATERHAM

Caterham Cars Limited, 2-3 Kennet Road, Dartford, Kent, DA1 4QN
+44 (0) 1322 625800

CATERHAMCARS.COM

 /CaterhamCars  @caterhamcars

Content is subject to change without notice.

© Caterham 2017

Printed in the UK. Edition 1.0 02/17

Images are for illustrative purposes only.